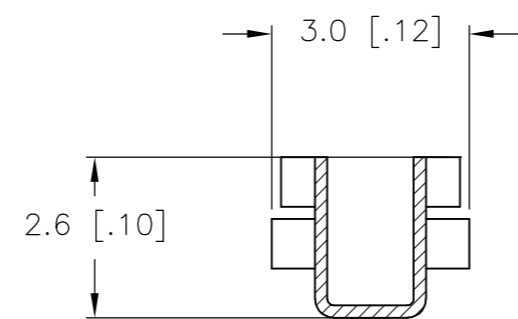
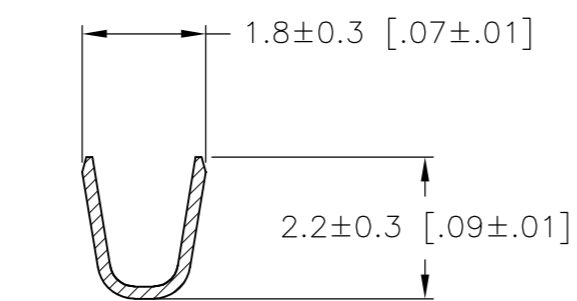
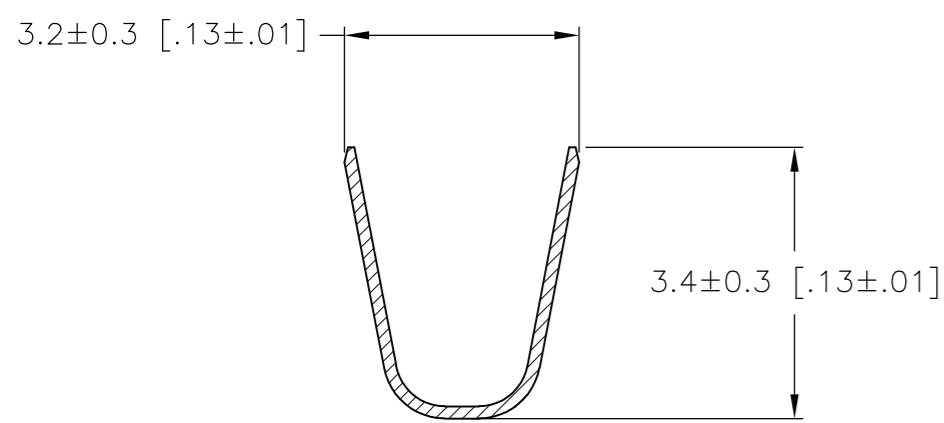
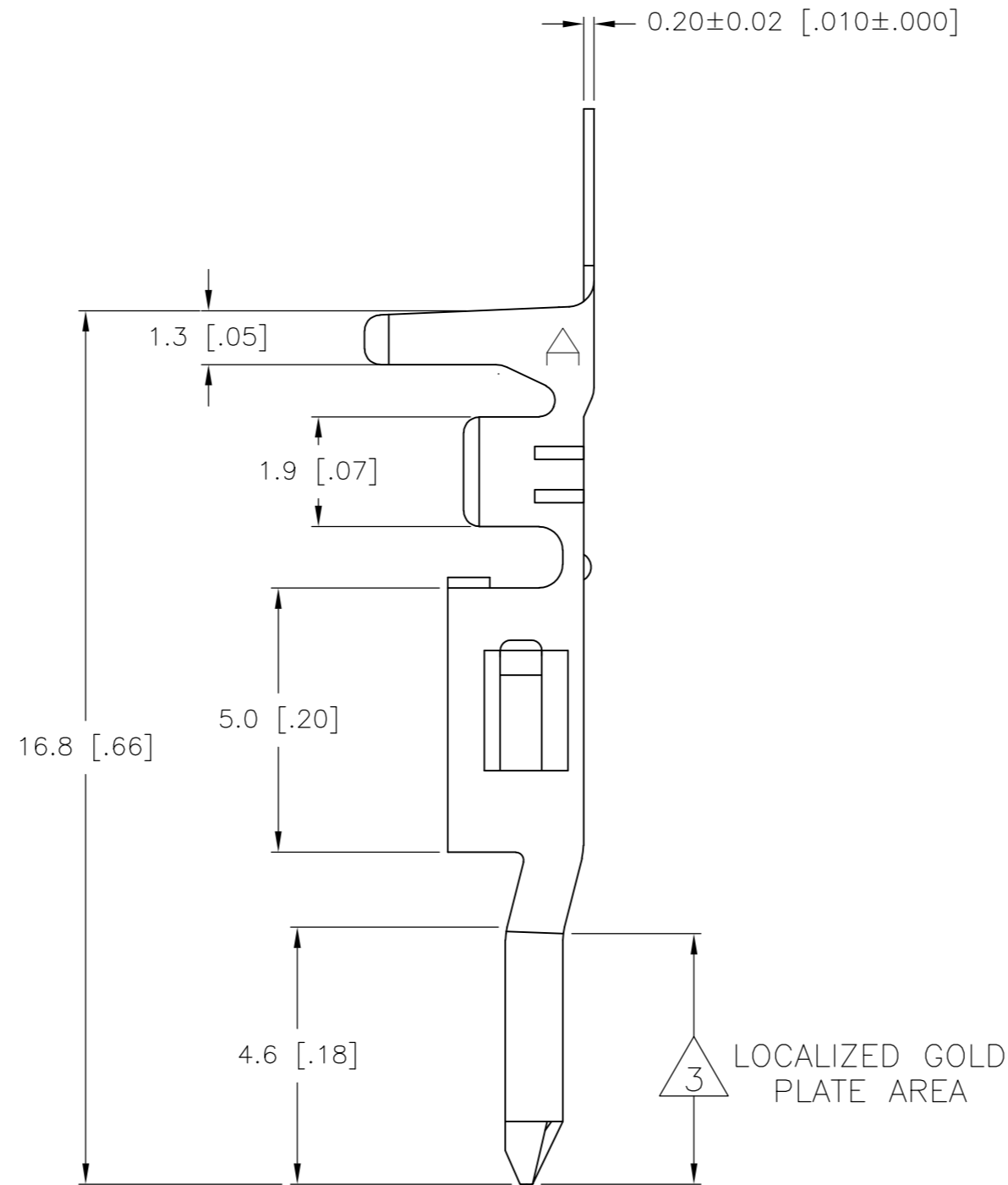
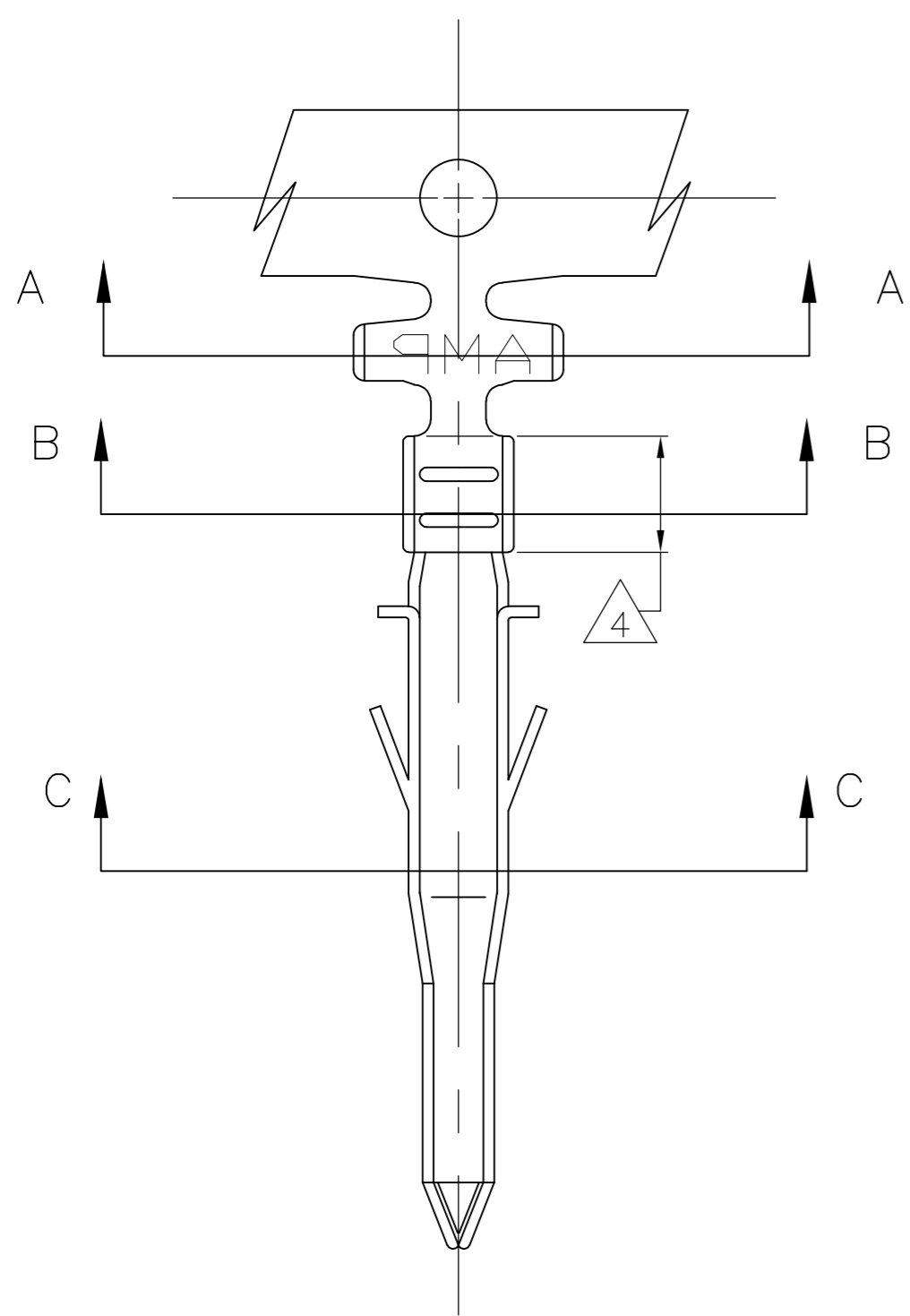


THIS DRAWING IS UNPUBLISHED. RELEASED FOR PUBLICATION
 © COPYRIGHT BY TYCO ELECTRONICS CORPORATION. ALL RIGHTS RESERVED.

LOC	DIST	REVISIONS					
CM	00	P	LTR	DESCRIPTION	DATE	DWN	APVD
		F		REVISED PER ECO-08-006888	24MAR08	HMR	CC

- 1 WIRE RANGE: 0.13-0.32mm² (26-22 AWG).
- 2 INSULATION RANGE: 1.20-1.75 DIA.
- 3 FINISH: 0.76µm MINIMUM GOLD IN LOCALIZED GOLD PLATE AREA OVER 1.27µm MINIMUM NICKEL
- 4 FINISH: 2.54µm MINIMUM PRE-TIN IN LOCALIZED TIN PLATE AREA.



SECTION A-A

SECTION B-B

SECTION C-C

METRIC

3 4	PHOS. BRZ.	794957-4
PRE-TIN	PHOS. BRZ.	794957-3
3 4	BRASS	794957-2
PRE-TIN	BRASS	794957-1
FINISH:	MATERIAL:	PART NO.

THIS DRAWING IS A CONTROLLED DOCUMENT.		DWN	S. HAMM	06-SEP-2001	Tyco Electronics Corporation Harrisburg, PA 17105-3608								
DIMENSIONS: mm [INCHES]		CHK	D. COLEY	07-SEP-2001									
TOLERANCES UNLESS OTHERWISE SPECIFIED:		APVD	D. COLEY	07-SEP-2001									
0 PLC ± 1 PLC ± 2 PLC ± 0.25 [010] 3 PLC ± 0.15 [.006] 4 PLC ± 0.050 [.0020] ANGLES ±		PRODUCT SPEC	NAME										
MATERIAL	FINISH	APPLICATION SPEC	TERMINAL PIN VAL-U-LOK(TM)		RESTRICTED TO								
CUSTOMER DRAWING		WEIGHT	SIZE	A2	CAGE CODE	00779	DRAWING NO	C=794957	SHEET	1 OF 1	REV	F	
SCALE		10:1		SCALE		10:1		SHEET		1 OF 1		REV	F